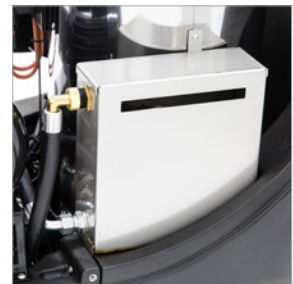


# MAC DROP REVOLUTION

## Top Machine Specification in a Compact Design

- Industrial low revving 1450rpm motor
- High quality Annovi Reverberi pump
- 30 second auto stop/start system
- High pressure detergent system
- Stainless steel break water tank



### KEY SPECIFICATION

Hot Water Mobile

11ltr/min Water Flow

120bar Pressure

110v or 230v Power Supply

High Pressure Chemical

Automatic Stop/Start System



# MAC DROP REVOLUTION



## THE THREE MAIN REASONS FOR THE DROP REVOLUTION'S SUCCESS

- 1** LOW REVVING 1450RPM PUMP & MOTOR
- 2** 30 SECOND AUTO STOP/ START SYSTEM
- 3** HIGH PRESSURE DETERGENT SYSTEM

## STANDARD FEATURES

- Tough GRP plastic chassis and cover
- Annovi Reverberi RC 11.17 pump
- Industrial 1450rpm 4 pole electric Nicolini motor
- Automatic stop/start system
- Efficient M1 boiler system with double spiral coil
- Stainless steel water tank
- High pressure chemical system
- 7lt internal detergent tank in GRP
- 22lt internal fuel tank in GRP
- 4 large robust wheels for tough terrain
- Bypass valve and safety valve
- Burner control with pressure switch and thermostat
- Including 10mt high pressure hose, single lance and heavy-duty trigger



30 SECOND  
AUTO STOP/START



	MAC18/RA	MAC18/RA110
Water Flow	11lt per minute	11lt per minute
Pressure	120bar, 1740psi	120bar, 1740psi
Motor Specification	3hp, 1450rpm	3hp, 1450rpm
Chemical	High Pressure	High Pressure
Shutdown System	Auto Stop/Start	Auto Stop/Start
Temperature	0-100°C	0-100°C
Power	230v	110v
Weight	90kg	90kg
Dimensions (h x w x d)	86 x 60 x 90cm	86 x 60 x 90cm

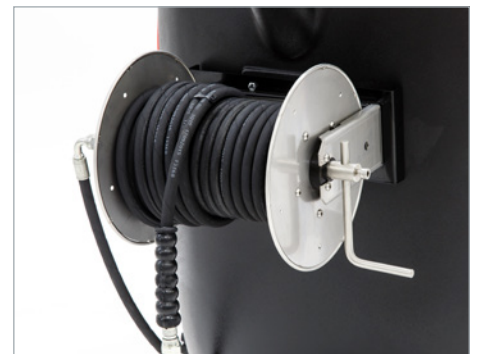


IMAGE SHOWS OPTIONAL HOSE REEL